

Workhorse Sentinel

- MARINE MEASUREMENTS
- NAVIGATION
- WATER RESOURCES

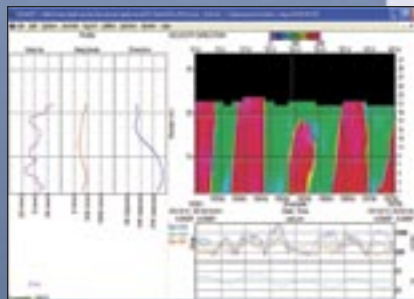
SELF-CONTAINED 1200, 600, or 300 kHz ADCP

The global leader in high-accuracy data collection

The self-contained **Sentinel** is RD Instruments' most popular and versatile Acoustic Doppler Current Profiler configuration, boasting thousands of units in operation in over 50 countries around the world.

With up to 165 meters of profiling range, the high-frequency Sentinel ADCPs are ideally suited for a wide variety of applications. Thanks to RDI's patented BroadBand signal processing, the Sentinel also offers unbeatable precision, with unmatched low power consumption, allowing you to collect more data over an extended period.

The lightweight and adaptable Sentinel is easily deployed on buoys, boats, or mounted on the seafloor. Real-time data can be transmitted to shore via a cable link or acoustic modem, or data can be stored internally for short or long-term deployments. The Sentinel is easily upgraded to include pressure, bottom tracking, and/or directional wave measurement—for the ultimate data collection solution.



The Workhorse Sentinel offers:

- **Versatility:** Direct reading or self contained, moored or moving, the Sentinel provides precision current profiling data when and where you need it most.
- **A solid upgrade path:** The Sentinel has been designed to grow with your needs. Easy upgrades include pressure, bottom tracking, and directional wave measurement.
- **Precision data:** RDI's patented BroadBand signal processing delivers very low-noise data, resulting in unparalleled data resolution and minimal power consumption.
- **A four-beam solution:** RDI's patented 4-beam design improves data reliability by providing a redundant data source in the case of a blocked or damaged beam; improves data quality by delivering an independent measure known as error velocity; and improves data accuracy by reducing variance in your data.



RD Instruments
Acoustic Doppler Solutions

Workhorse Sentinel

SELF-CONTAINED 1200, 600, OR 300 kHz ADCP



Technical Specifications

Water Profiling

Depth	Typical Range 12m ²		Typical Range 50m ²		Typical Range 110m ²	
	Cell Size ¹	1200kHz	600kHz	300kHz		
Vertical Resolution	Range ³	Std. Dev. ⁴	Range ³	Std. Dev. ⁴	Range ³	Std. Dev. ⁴
0.25m	11–14m	12.9cm/s				
0.5m	13–16m	6.1cm/s	39m	12.9cm/s	see note ¹	
1m	14–18m	3.0cm/s	43m	6.1cm/s	92–71m	12.8cm/s
2m	15–20m ²	2.0cm/s	47m	3.0cm/s	102–78m	6.1cm/s
4m	see note ¹		52m ²	2.0cm/s	113–86m	3.0cm/s
8m					126–95m ²	2.0cm/s

¹User's choice of depth cell size is not limited to the typical values specified; ²Longer ranges available; ³Profiling range based on temperature values at 5°C and 20°C, salinity = 35ppt; ⁴BroadBand mode single-ping standard deviation (Std. Dev.).

Long Range Mode

	Range (m)	Depth Cell Size (m)	Std. Dev. (cm/s)
1200kHz	24	2	3.5
600kHz	70	4	3.8
300kHz	165	8	3.8

Profile Parameters

Velocity accuracy:

- **1200, 600:** 0.3% of the water velocity relative to the ADCP ±0.3cm/s
- **300:** 0.5% of the water velocity relative to the ADCP ±0.5cm/s

Velocity resolution: 0.1cm/s

Velocity range: ±5m/s (default) ±20m/s (maximum)

Number of depth cells: 1–128

Ping rate: 2Hz (typical)

Echo Intensity Profile

Vertical resolution: Depth cell size

Dynamic range: 80dB

Precision: ±1.5dB (relative measure)



RD Instruments

Acoustic Doppler Solutions

www.rdinstruments.com

Transducer and Hardware

Beam angle: 20°

Configuration: 4-beam, convex

Internal memory: Two PCMCIA card slots; one memory card included

Communications: Serial port selectable by switch for RS-232 or RS-422. ASCII or binary output at 1200–115,400 baud.

Standard Sensors

Temperature (mounted on transducer):

Range: -5° to 45°C

Precision: ±0.4°C

Resolution: 0.01°

Tilt: Range: ±15°

Accuracy: ±0.5°

Precision: ±0.5°

Resolution: 0.01°

Compass (fluxgate type, includes built-in field calibration feature):

Accuracy: ±2°⁴

Precision: ±0.5°⁴

Resolution: 0.01°

Maximum tilt: ±15°

⁴@ 60° magnetic dip angle, 0.5G total field

Power

DC input: 20–60VDC; internal battery pack, external battery pack, or external power supply

Voltage: 42VDC new; 28VDC depleted

Capacity: @ 0°C: 400 watt hours

Environmental

Standard depth rating:

200m; optional to 6000m

Operating temperature: -5° to 45°C

Storage temperature without batteries: -30° to 60°C

Weight in air: 13.0kg

Weight in water: 4.5kg

Software

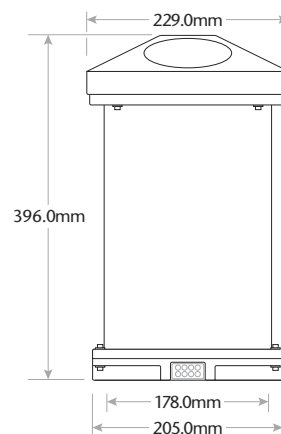
Use RDI's Windows™-based software for the best results:

- WinSC—Data Acquisition
- WinADCP—Data Display and Export

Upgrades Available

- Memory: 2 PCMCIA slots, total 2GB
- Pressure sensor
- External battery case
- High-resolution water-profiling modes
- Bottom tracking
- AC/DC power converter, 48VDC output
- Pressure cases for depths up to 6000m

Dimensions



RD Instruments

9855 Businesspark Avenue, San Diego, CA 92131 USA

Tel. (858) 693-1178 • Fax (858) 695-1459 • E-mail: sales@rdinstruments.com

Les Nertieres 5 Avenue Hector Pintus 06610 La Gaude France

Tel. +33-49-211-0930 • Fax +33-49-211-0931 • E-mail: rdi@rdieurope.com

