

TSS 440 PIPE & CABLE SURVEY SYSTEM



Based on the industry standard TSS 340, the TSS 440 utilises pulse induction technology and advanced digital signal processing to accurately determine ranges to buried pipelines or cables. The system is capable of detecting any conductive material and advances in signal processing techniques enable the TSS 440 to detect at greater ranges than any other pulse induction based survey tool.

A full integrated system, the TSS 440 combines location, steering and accurate depth of burial survey data to suit a wide range of applications.

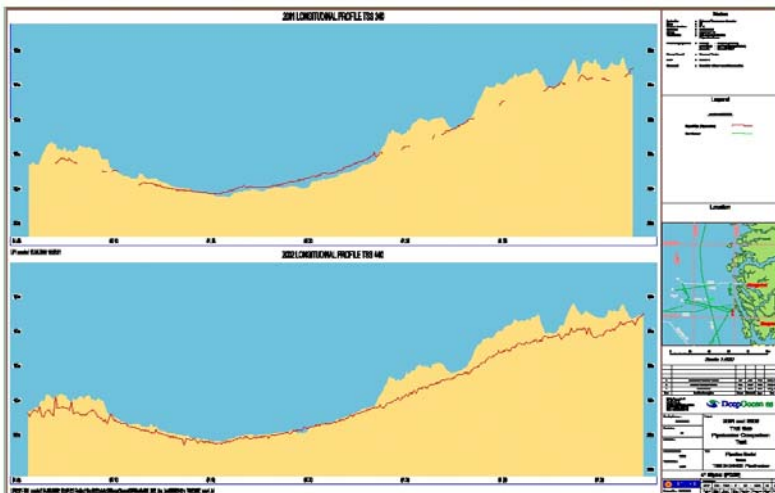
- Up to 50% greater range than existing 340 system
- Standard TSS ease of installation
- Improved ease of use with DeepView for Windows operating software
- EMC and CE rated
- Backed by global network of VT TSS representatives

Features:

- Pulse induction technology allows accurate survey information regardless of vehicle heading
- Windows based display and control software
- DSP techniques give quality control information
- Long range detection of buried subsea targets
- Full integrated system with altimeter, spares and documentation

Benefits:

- No time consuming vehicle calibrations required
- Easy to operate
- Improve features
- Improved operating windows
- Simple to install and service



TSS 440 PIPE & CABLE SURVEY SYSTEM

TECHNICAL SPECIFICATIONS		
Subsea Electronics Pod (SEP)	Dimensions	140mm x 450mm
	Weight	In air : 10Kg In water: 2Kg
	Communication	20mA 2 or 4 wire digital current loop or RS232 via one or two twisted pair or multiplexer
Power Supply Pod (PSU)	Dimensions	140mm x 450mm
	Weight	In air : 10Kg In water: 2Kg
	Voltage input	98-135 Volt, 150 Watt continue (240V optional)
	ROV connection	Via 8 way waterproof connector
Surface Display Console (SDC)	SDC hardware	102 key keyboard, pointing device, 15" TFT monitor, standard 19" rack mounting
	Description	Pentium 4 running Windows 2000
	Disk size	Hard disk: 20Gb Floppy disk: 1.44Mb CD: 16 x Read
	Ports	4 serial, 2 parallel, 1 ethernet
	Interface	20mA current loop, data logger, altimeter, printer, video overlay PAL/NTSC format
	Voltage input	85-265V, 47-63Hz, 250 Watt
	Input frequency	48-62 Hz
	Shock resistance	Operating: better than 5g for <10ms Non-operating: better than 40g for <10ms
Search Coils (3 coil system supplied with a non-conductive mounting frame)	Size	1000mm x 1000mm x 30mm
	Weight	In air: 10Kg In water: 2Kg
Depth rating	All subsea components are depth rated to 3000m	

Due to continuous development, specifications may vary from those listed above.



1 Garnett Close, Greycaine Industrial Estate, Watford, Hertfordshire WD24 7JZ, UK
Tel: +44 (0)1923 470800 Fax: +44 (0)1923 244849 Email: tssmail@vtss.com

Aberdeen: 10 The Technology Centre, Aberdeen Offshore Technology Park, Claymore Drive, Bridge of Don AB23 8JD, UK

Tel: +44 (0)1224 707081 Fax: +44 (0)1224 707085 Email: tssmail@vtss.com

Houston: 10801 Hammerly Blvd, Suite 128, Houston TX 77043, USA

Tel: +1 713 461 3030 Fax: +1 713 461 3099 Email: sales@vtss.com