

## Datasheet

# Wideband Sub-Mini Transponder/Responder (WSM)



### Description

The Types 8070/71 Wideband Sub-Mini (WSM) Transponders incorporate Sonardyne's new Wideband Technology and are designed for positioning ROVs and towfish in water depths up to 3,000 metres.

The Type 8070 WSM features a high-power directional transducer with an acoustic output comparable to Sonardyne's most powerful Compatt transponders. The Type 8071 WSM features an omni-directional transducer.

A serial data link, allows the WSM to be used with all of the popular acoustic navigation systems. In addition, WSMs now support all Sonardyne tone and wideband signals and all HPR 300 and HiPAP® channels.

A new feature of the WSM is an On/Off switch for improved reliability.

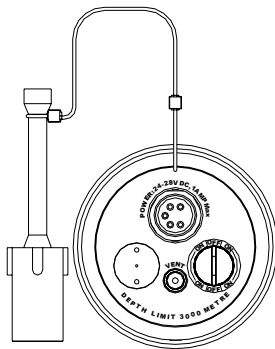
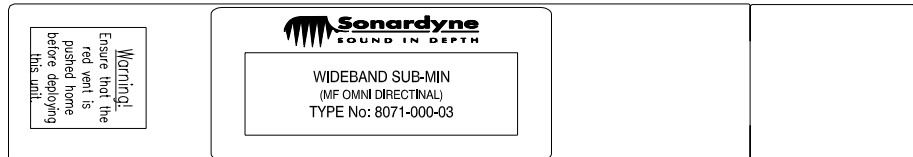
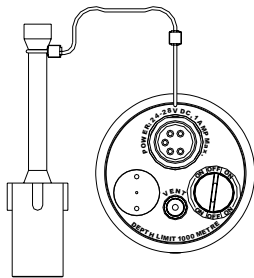
Both types of WSM have the option of a depth sensor for improved positioning accuracy.

### Key Features

- Choice of 1,000 Metre or 3,000 Metre depth rating
- Choice of Omni-Directional or Directional beamshape with class leading acoustic power output
- Channel selection via serial data port by PC
- Transponder or Responder operating modes
- Long-life NiMH battery
- Compact and rugged design
- Windows based software for test and setup
- On/Off Switch
- Optional depth sensor

# Datasheet

## Wideband Sub-Mini Transponder/Responder (WSM)



Feature	Type 8071	Type 8070
Depth Rating	1,000 Metres	3,000 Metres
Operating Frequency	MF (19-36kHz)	MF (19-36kHz)
Operating Channels	All Sonardyne Wideband/Tone HPR 300 & 400 Channels	All Sonardyne Wideband/Tone HPR 300 & 400 Channels
Transducer Beamshape	Omnidirectional	Directional
Transmit Source Level (dB re 1µPa @ 1m)(26-32kHz)	(External Power) 190dB (Battery – High Power) 188dB (Battery – Low Power) 185dB	202dB 199dB 196dB
Receive Sensitivity (dB re 1µPa)	High Gain <100dB Low Gain <110dB	<100dB <110dB
Power Supply	Long-Life Ni MH battery or ext. 24V via ROV's umbilical	Long-Life Ni MH battery or ext. 24V via ROV's umbilical
Number of Replies (Responder)	Unlimited with External Power	Unlimited with External Power
Depth Sensor	Option	Option
Maximum Update Period	750ms	750ms
Quiescent Life	60 Days	60 Days
Mating Connector	Subconn MCIL5F	Subconn MCIL5F
Mechanical Construction	Aluminium Alloy, Anodised	Aluminium Alloy, Anodised
Dimensions (LxDia)	401mm (15.8") x 75mm (2.95")	408mm (16.1") x 87mm (3.42")
Weight in Air	2.7kg	5.0kg
Weight in Water	1.4kg	2.6kg
Battery Charger	7972-000-04	