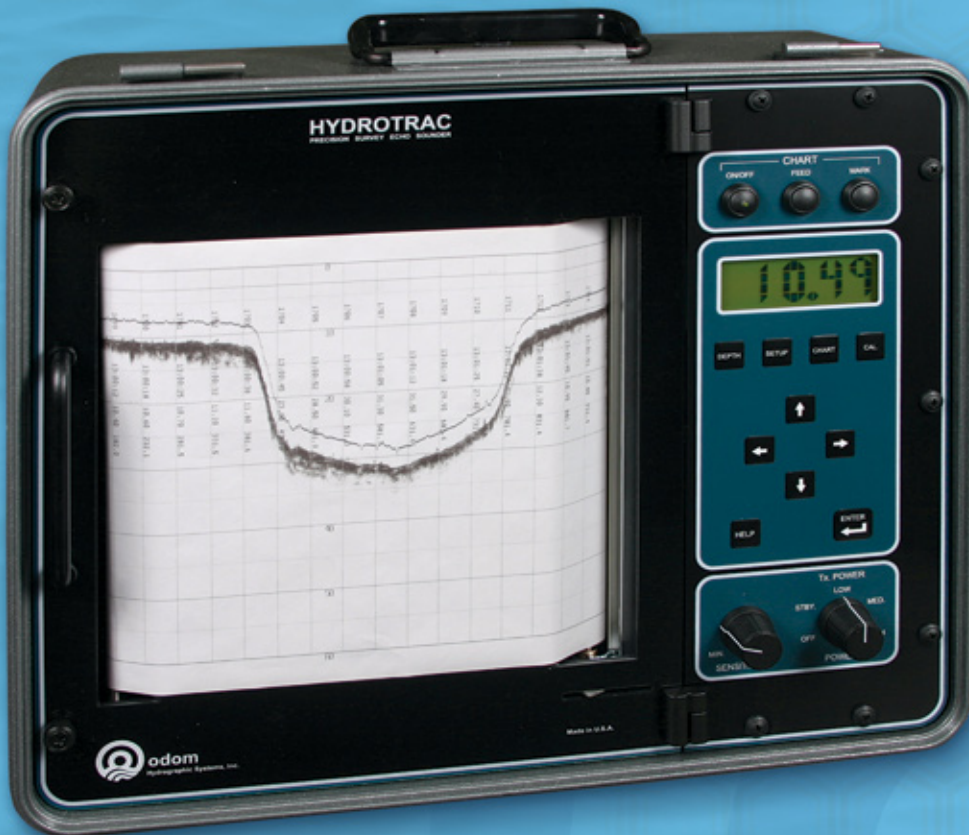


# ODOM HYDROTRAC™



**odom**  
HYDROGRAPHIC SYSTEMS

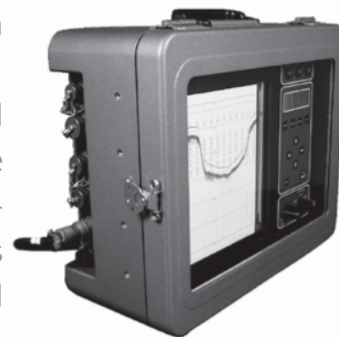


- IDEAL FOR SMALL BOATS AND HARSH CONDITIONS
- FREQUENCY AGILE
- HIGH RESOLUTION THERMAL PRINTER
- INTERNAL DGPS (OPTIONAL)
- WATERPROOF
- FLASH UPGRADEABLE
- SIDE SCAN OPTION

**SINGLE FREQUENCY PORTABLE  
HYDROGRAPHIC ECHO SOUNDER**

# ODOM HYDROTRAC™

Specifically designed for work in less-than-ideal circumstances on small survey boats and inflatable watercraft, the **Hydrotrac™** offers compact portability and the confidence of knowing you're using an Odom product. It is completely waterproof and comes equipped with the same advanced features you've come to trust and depend on in Odom echo sounders.



It is completely waterproof and comes equipped with the same advanced features you've come to trust and depend on in Odom echo sounders.

**Buy Odom – invest in your peace of mind.**

## SPECIFICATIONS

### Environmental Operating Conditions:

- 0 – 50 C

### Frequency Agile

- Operator selectable – 24, 33, 40, 200, 210 and 340 kHz

### Output Power

- 600 watts

### Power Requirement

- 11-28 V DC (standard)
- 110/220 V AC (optional)

### Communication

- 2 RS232 or RS422 ports

## FEATURES

### Accuracy

- 8.5 in/216 mm thermal printer (fax paper)
- LCD display (1 in high)
- Sealed keypad controls
- Manual/remote mark command

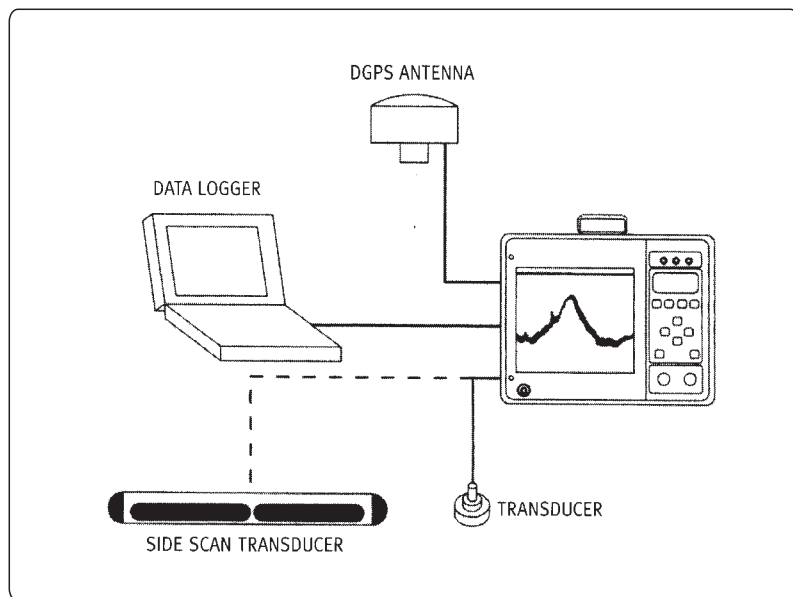
- Auto scale change (phasing)
- GPS input
- Heave input from motion sensor
- Annotation printed on chart
- Auto pulse length, TVG
- Output: NMEA, ECHOTRAC, DESO 25, etc.
- Waterproof (with cover in place)
- Lightweight (24.8 lbs/11.25 kg)
- Small size (14.5 h x 16.5 w x 8 d in or 36.83 h x 41.91 w x 20.32 d cm)
- Accuracy: 200 kHz – 1 cm 0.1% of depth value (corrected for sound velocity); 33 kHz – 10 cm 0.1% of depth value (corrected for sound velocity)
- Resolution: 0.1 ft/0.01 m
- Fix mark annotation: date, time, fix no., depth (and GPS if input)
- Optional 200 kHz or 340 kHz side scan transducer
- Optional built-in DGPS
- Optional remote display
- Flash memory upgradeable
- Built-in simulator
- Software included: Comlog
- Operation and installation manuals provided on CD

## CONTROLS

- Sensitivity
- Chart on/off and advance
- Event mark (internal selectable timer)
- Transmit power (high/med/low)

## TOUCH PAD SETTINGS

- Draft, velocity and tide inputs
- Time and date
- Scale width and center
- Blanking
- Calibration gate
- Alarm filter
- Fix interval
- Chart speed
- HELP function (prints on chart)
- Current parameters (prints on chart)



**odom**  
HYDROGRAPHIC SYSTEMS

1450 Seaboard Avenue  
Baton Rouge, Louisiana 70810-6261 USA  
E-mail: [email@odomhydrographic.com](mailto:email@odomhydrographic.com)  
[www.odomhydrographic.com](http://www.odomhydrographic.com)