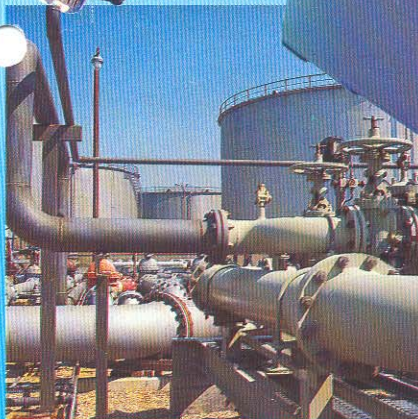
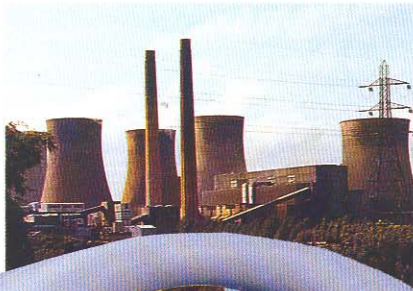


pearpoint

World leaders in TV Pipeline Inspection Systems



COLOUR mini flexiprobe® **INSPECTION SYSTEM**

Patent No. 2172079

Inspecting the inaccessible

THE COLOUR "mini flexiprobe®" INSPECTION SYSTEM

Pearpoint, already the world leader in Television Inspection Systems, introduces the Colour "mini flexiprobe®". The "mini flexiprobe®" with its compact features and high performance will benefit every type of industry which has remote inspection applications.

Unlike competitive systems that require a large multi conductor cable to power the camera, the "mini flexiprobe®" system features a patented semi-flexible push rod containing only four conductors which provides power to the camera, operates the remote camera functions and feeds the video picture to the monitor. The system also features a rechargeable internal battery, liquid crystal monitor and fully waterproof membrane keyboard. The system is unique in that all the component parts are housed in one compact portable housing known as the Camera Control Centre or "CCC".

The "mini flexiprobe®" is available with different lightheads and centering devices making the system suitable to inspect or survey pipes and structures with diameters or entry apertures of 25mm to 150mm.

The "mini flexiprobe®" is manufactured by **Pearpoint** under a strict quality control programme.

Pearpoint is ISO 9001 accredited which ensures that **Pearpoint** systems meet the strictest quality constraints imposed by the certifying bodies in Europe and the USA.

Integral carrying handle which is formed as the rotationally moulded polyethylene housing. This process provides the extremely tough durable case which is demanded by the type of application for which the product is used.

Omnidirectional arm enables monitor to be extended as far as possible thus enabling the user to view the monitor in the optimum viewing position.

Unique integral Camera Control Centre (CCC) allows amount of rod to be displayed on the monitor.

Various lightheads are available for use in pipes and structures with access diameters of 25 to 150 mm.

Highly sensitive 2.5 lux camera measuring only 23mm diameter by 75mm long. Fully Waterproof and sealed to IP65.

Power lead cassette holds 5 metres of cable complete with 12v cigarette lighter plug.

The Camera Control Centre (CCC) may be powered from:

- an internal battery pack mounted in the base of the CCC
- a 12 volt accessory socket in a vehicle
- its own AC mains power adaptor

The internal battery pack will be charged when the unit is operating or connected to any external power source.

Front rod cassette lock. This allows the user to lock the "mini flexiprobe®" rod in a safe position while the unit is in transit.

Easily removable rod cassette allowing quick change of rod type.

Rod cassette holds up to 61 metres of 6mm epoxy push rod. An extra cassette of more rigid 7mm rod is available.

Monitor can allow the user to view all aspects of the camera, including focus function.

Accessory storage for devices and cables.

The rechargeable battery pack provides up to 10 hours of operation. Additional option for mission critical power is available.

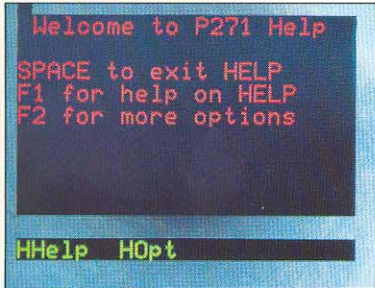
APPLICATIONS

The following industries and authorities will find the "mini flexiprobe®" invaluable wherever a "third eye" is required:

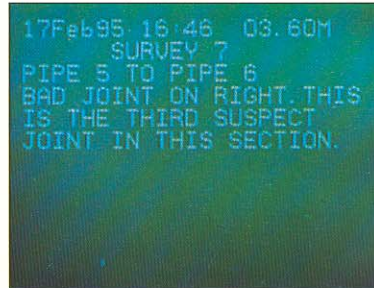
Water Utilities:	Pipes, manholes, domestic inspections	Nuclear:	Turbines, auxiliary plant
Telecommunications:	Pipes, cable ducts and conduits	Police and Security:	Under floor voids, cavities
Gas Utilities:	Pipes	Food Industry:	Food Processing pipes
Oil Industry:	Pipes	Municipal Authorities:	General Plant Inspection
Electricity Generation:	Header, pipes, tanks	Pest Control:	Loft Cavities

There are many other applications in which the "mini flexiprobe®" will find a natural home.

COMPREHENSIVE VIDEO MONITORING



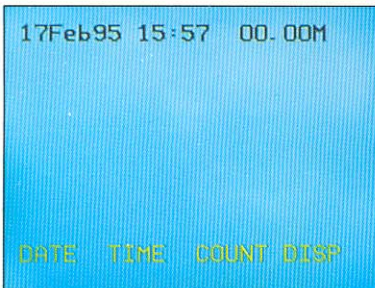
A comprehensive on screen help menu is available by simply pressing the HELP key. There are several levels which may be accessed at any time during the survey.



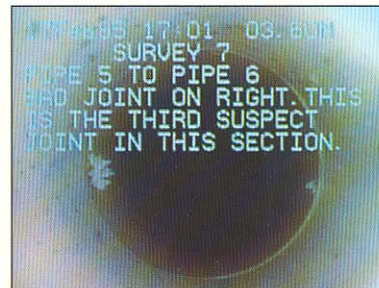
Using the full 'qwerty' keyboard up to nine pages of survey report text may be entered.



The scene inside the pipe is displayed on the high resolution LCD screen. A sharp picture is ensured by the use of the remote focus and iris controls located to the side of the LCD display.



The system generates an "on screen" date and time display which can be called up at any time. The rod count is displayed to indicate how much rod has been paid out. The count display is available in imperial or metric. Video tabs at the bottom of the screen advise the user which functions to use.



The survey report may be super-imposed on the video image from within the pipe, allowing a composite picture to be recorded on a standard VHS video recorder. The picture, complete with survey text, may be replayed via the Camera Control Centre (CCC) for later fault analysis.

LIGHTHEADS AND BRUSHES



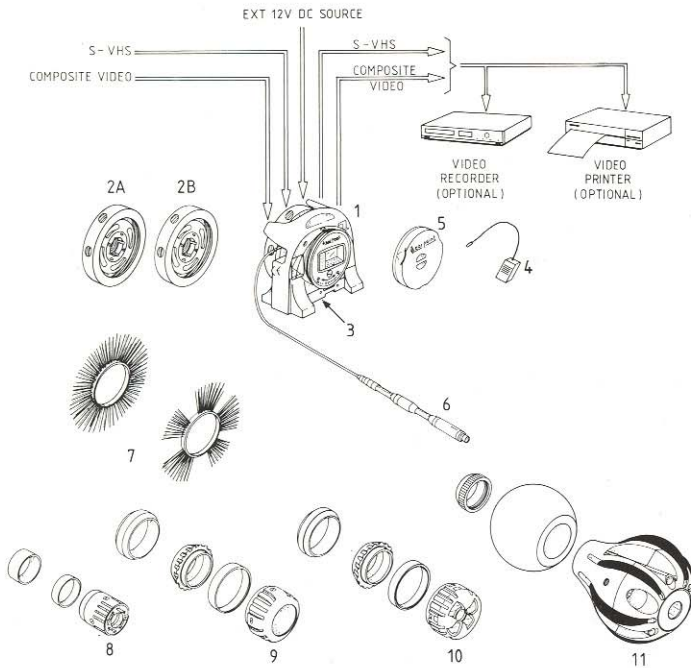
This 24mm lighthouse is for pipes with an internal diameter of 25mm or more. Miniature centering devices are available for use with the lighthouse.



The 30mm lighthouse gives more illumination for pipes of 50mm or more. Again, centering devices are available to provide optimum centering within the pipe.



This contoured lighthouse is specifically for the larger pipe. It provides additional illumination and has its own unique centering device with built in shock absorption.



1. CAMERA CONTROL CENTRE
HU2710101 PAL
HU2710201 NTSC
- 2A CASSETTE OF THIN FLEXIBLE ROD
HK2710401 200ft 61m
- 2A CASSETTE OF INTERMEDIATE FLEXIBLE ROD
HK2711201 200ft 61m
3. BATTERY PACK
HK2710301
4. BATTERY CHARGER UNIT
HK2711301
5. COVER, CAMERA CONTROL CENTRE
HK2711011
6. MINI FLEXIPROBE COLOUR CAMERA
HC2700101 PAL
HC2705001 NTSC
7. BRUSH SET
HI2707301
8. LIGHTHEAD 1" 24mm DIAMETER
HI2704101
9. BRUSH ADAPTOR FOR 1" 24mm LIGHTHEAD
HI2704301
10. LIGHTHEAD 1 1/4" 30mm DIAMETER
HI2704401
11. LIGHTHEAD 2 3/4" 70mm DIAMETER WITH SKID
HI2704601

CAMERA CONTROL CENTRE HU2710101 HU2710201
(with integral battery pack)

Functions: Camera Control
Camera Image Display
LCD Monitor Control
Video Computer
Integral Battery Pack
Integral Rod Cassette
Integral Rod Counter
Composite and SVHS Video Outputs

Construction: Medium density polyethylene
Weight: excl. battery pack 41lb 18.75kg
incl. battery pack 53lb 23.95kg
Dimensions: Height 22.6" 575mm
Width 21.25" 540mm
Depth 12.9" 330mm
Electrical: 12V DC from battery pack/external supply
Power Consumption: excl. camera/lightheads 20 watts
Electromagnetic compatibility: FCC Class FCC Part 15, Subpart B, Class B (Digital Devices)
EC Class EN 50081-1, EN50082-2
Environmental specification: IP65

MINI FLEXIPROBE COLOUR CAMERA HC2700101 HC2705001

Standards: PAL or NTSC
Sensitivity: 2.5 Lux @ f1.8
Horizontal resolution: 400 TV lines
per picture height
Focus, motorised: 13mm to Infinity
Iris, electronic: Integration period
100µs to 20ms in
8 steps
Lens: Aperture f1.8

Construction: Stainless Steel
Weight: 0.8lb 360gm
Dimensions: lens front to rod connector 11.4" 292mm
max. rigid length - 24mm lighthouse 3.3" 85mm
max. rigid length - 30mm lighthouse 3.4" 87mm
max. rigid length - 70mm lighthouse 3.0" 76mm
diameter, excl. lighthouse 1.0" 24mm
Electrical: 25V DC supply from control unit
excl. lighthouse 2 watt power consumption
Sealing: Waterproof up to 60psi 4 bar

FLEXIBLE ROD CASSETTE HK2710401 HK2711201

UK Patent: 2172079

Construction: Epoxy glass reinforced inner
Weight: HK2710401 11lb 5kg
HK2711201 13lb 6kg
Sheathing: Polypropylene outer sheath (with static protection)
Dimensions: Length 200ft 61m
Rod Diameter: HK2710401 0.236" 6mm
HK2711201 0.276" 7mm

BATTERY PACK HK2710301

Batteries: 2 x 6V DC
Weight: 11.5lb 5.2kg
Battery charge supply: 18V DC from
charger unit
HK2711301
Power requirement: 11-30V DC (55 watt)

Construction: Sealed lead acid
P271 System Mission Time: 1" 24mm lighthouse 3 hours
1 1/4" 30mm lighthouse 2 hours 30 minutes
2 3/4" 70mm lighthouse 2 hours

LIGHTHEADS HI2704101 HI2704401 HI2714601

Diameter: HI2704101 1" 24mm 4 bulbs 2.8 watt output
HI2704401 1 1/4" 30mm 8 bulbs 4.6 watt output
HI2704601 2 3/4" 70mm 2 bulbs 12 watt output

Pearpoint Limited

Pearpoint House,
47 Woolmer Way, Bordon,
Hampshire, GU32 9QE
England
Tel: (44) 0 1420 489901
Fax: (44) 0 1420 477597

Pearpoint Limited

Canklow Meadows Industrial Estate,
West Bawtry Road, Rotherham,
South Yorkshire, S60 2XL
England
Tel: (44) 0 1709 836075
Fax: (44) 0 1709 836253

Pearpoint Inc.

72055 Corporate Way,
Thousand Palms,
California 92276, U.S.A.
Tel: (1) (619) 343 7350
Fax: (1) (619) 343 7351