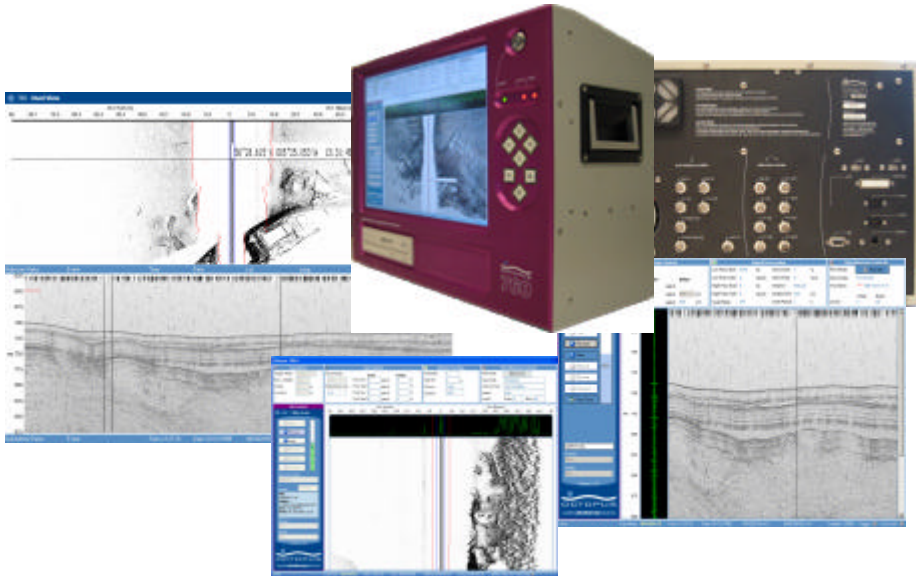


760™ Geophysical Acquisition System

The simple digital solution for simultaneous sidescan and sub-bottom profiler



The Octopus 760™ geophysical acquisition system is an all-new multi-channel acquisition package for sidescan sonar and sub-bottom profiler in a single instrument.

Building on the reputation of the industry leading Octopus 360 sub-bottom processor and the 460 sonar acquisition systems, the 760 brings the Octopus geophysical acquisition range right up to date, whilst retaining the simplicity of operation and rugged, reliable design familiar to Octopus users around the world.

Combining Octopus design philosophy focussing on ease of use, with the latest hardware and software and technology, the 760 guarantees compatibility with other systems and peripherals. Incorporating a large high resolution display and the familiar Octopus key-driven user interface in a rugged instrument, the 760 is simple to use in all survey scenarios and is ideally suited to use on small and large vessels alike. Adopting the latest features and familiarity of Windows XP™ in an instrument package provides all of the benefits with none of the problems. With a simple layout taken from the previous Octopus 360 and 460, the 760 combines ease of use with maximum flexibility and performance. Designed and packaged specifically for geophysical acquisition, the 760 is ready to use out-of-the-box and requires minimal training and no special hardware configuration, whilst the optional in-built UPS capability guards against power failure ensuring all data is kept safe.

The Octopus 760 is compatible with all standard sidescan sonars, including the latest digital towfish, and all standard sub-bottom profilers, pingers, boomers, sparkers and chirp in one compact package.

FEATURES

- 4 channel analogue sidescan acquisition
- 2 channel analogue sub-bottom acquisition
- Analogue output
- Dual SIMULTANEOUS sidescan and sub-bottom acquisition
- Simultaneous display of sidescan and sub-bottom
- Asynchronous sidescan and sub-bottom trigger timing
- Standard recording formats: XTF, SEGY, CODA, GeoPro
- Internal recording to hard disk and DVD RAM disks
- Simple 7-key interface
- Serial inputs for navigation and standard fix strings
- High resolution 15" screen
- High speed network connectivity
- 19" rack-mountable or freestanding
- Supports all standard printers (analogue and digital)
- Optional in-built UPS

BENEFITS

- Simple to use
- Reduced operating costs
- Reduced hardware
- Minimal user training
- Maximum flexibility
- Fully compatible with all popular post processing systems
- Extends the life of analogue sonars
- Data stored internally is easily and quickly downloaded

CodaOctopus Ltd

www.codaoctopus.com
sales@codaoctopus.com

tel +44 131 553 1380 or +44 1869 337570, USA & Canada +1 888 340 2627

24hr support: support@codaoctopus.com

Support USA & Canada +1 888 340 CODA; **worldwide** +44 131 553 7003



Technical Specification

Octopus 760S™ single acquisition user selectable for sidescan *OR* sub-bottom profiler

Octopus 760D™ dual acquisition simultaneous sidescan *AND* sub-bottom profiler


INPUTS AND OUTPUTS		
	Sidescan Acquisition	Sub-bottom Profiler Acquisition
Analogue inputs	4 independent 16 bit channels scalable from 125mV to 5V configurable as 4 x sidescan sonar channels (port & starboard channels x 2)	2 independent 16 bit channels scalable from 125mV to 5V configured as 1 x sub-bottom + analogue heave input.
Analogue outputs	2 analogue outputs(port & starboard) selectable source, synchronous with trigger out.	1 analogue output (sub-bottom data), synchronous with trigger out.
Trigger input	Single trigger input with variable threshold, synchronises all channels.	Single trigger input with variable threshold. Can operate asynchronously to main trigger.
Trigger outputs	Internal trigger (5v) user selectable range, 25m-1000m. Delayed trigger synchronised to start of sub-bottom acquisition.	Internal trigger (5v), user selectable range 50–1000mS. Delayed trigger synchronised to start of sub-bottom acquisition.
Navigation & fix data	2 x RS232 serial inputs (9 pin D-type) for NMEA navigation (GGA, GLL, VTG, RMC, etc.) or Octopus fix and annotation strings. Additional inputs on request.	
Printer interfaces	Centronics (25 way D-type) interface for Octopus, EPC, Ultra and Isys printers. SCSI interface for Alden/GeoPrinter (SCSI interface optional)	
Network	10/100/1000 MbitS ⁻¹ Ethernet interface (RJ45).	
Other interfaces	USB x 2 (standard) SCSI II (optional), others available on request.	
DATA RECORDING		
Recording devices	Internal 2.5" shock mounted hard disk (60Gb) Single DVD RAM/CD-R drive as standard. Optional second DVD RAM/CD-R. Other devices such as DAT, removable HDD etc. available on request.	
Recording formats	Sidescan sonar – XTF, CODA, GeoPro Sub-bottom profiler – SEG Y, CODA, XTF All data is recorded raw (without gain or processing applied)	
DISPLAY MODES		
Sidescan	Up to 4 channels of sidescan in vertical scrolling waterfall display with co-registered oscilloscope. All gain and processing controls on-screen.	
Sub-bottom	Single channel sub-bottom profiler display, horizontal scrolling with co-registered oscilloscope display. Pan and zoom functions for optimum data view. All gain and processing controls on-screen.	
Dual format	Simultaneous vertically scrolling sidescan AND horizontally scrolling sub-bottom.	
Navigation	All navigation, fix, annotation and status information shown on all screens.	
CONTROLS		
User Interface	Familiar Octopus 7-key interface allowing quick and easy navigation to all functions without the need for a mouse. Arrow keys snap between groups of controls and allow selection of specific functions. 'Y' & 'N' keys allow settings to be saved or cancelled. 'PAGE' key allow s rapid selection of display screens.	
PROCESSING		
Sidescan	Channel-independent gain & TVG. Bottom tracking, water column removal, slant-range correction.	
Sub-bottom	Gain, three stage TVG, high & low pass time varied filters (TVF), time varied stacking, swell compensation (automatic or external heave input).	
PHYSICAL		
Dimensions	443mm(w) x 355mm(h) x 235mm(d) (19" rack compatible).	
Weight	15kg	
Power	90-250Vac 47-400Hz, 200Watts. Optional 24Vdc input Optional in-built UPS coupled with a utomatic power management and controlled shutdown capability guards against power loss problems. <i>NB. requires 24V battery pack in place of second DVD drive</i>	
Construction	Rugged but lightweight aluminium chassis with anodised front panel	
Display	High-brightness 15" TFT screen, 1024 x 768 resolution	
Controls	Octopus 7-key user controls for all functions	

760™, Octopus™ and the Octopus logo are Trademarks of CodaOctopus

760 20050926

www.codaoctopus.com
sales@codaoctopus.com

Edinburgh tel +44 131 553 1380 fax +44 131 554 7143 Oxford +44 1869 337570 fax +44 1869 337571, USA/Canada +1 888 340 2627
24hr support: USA & Canada +1 888 340 CODA; worldwide +44 131 553 7003; support@codaoctopus.com

A  product. We reserve the right to change equipment specifications without notice.


OCTOPUS
Leading GeoSurvey Solutions