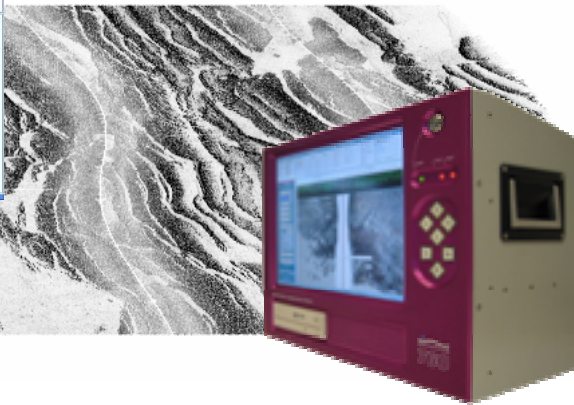
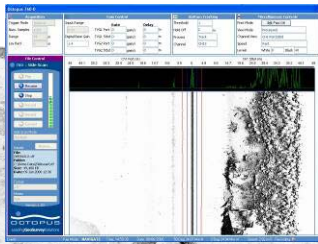


460+

Sonar Acquisition System

Simple and rugged acquisition for digital and analogue sidescan sonar in an all-new package



The Octopus 460+™ Sonar Acquisition System is the latest version of the Octopus 460 and 460P acquisition systems, in an all-new package.

Building on the reputation of the Octopus 460 and 460P, and utilising all new technology developed for its sister product the 760 Geophysical Acquisition System, the 460+ brings the Octopus sonar acquisition range right up to date, whilst retaining the simplicity of operation and rugged, reliable design familiar to Octopus users around the world.

Combining Octopus design philosophy focussing on ease of use, with the latest hardware and software and technology, the 460+ guarantees compatibility with other systems and peripherals. Incorporating a large high resolution display and the familiar Octopus key-driven user interface in a rugged instrument, the 460+ is simple to use in all survey scenarios and is ideally suited to use on small and large vessels alike. Adopting the latest features and familiarity of Windows XP™ in an instrument package provides all of the benefits with none of the problems. With a simple layout taken from the previous Octopus 460, 460+ combines ease of use with maximum flexibility and performance. Designed and packaged specifically for sidescan acquisition, the 460+ is ready to use out-of-the-box and requires minimal training and no special hardware configuration, whilst the optional in-built UPS capability guards against power failure ensuring all data is kept safe.

The 460+ is compatible with all standard analogue sidescan sonars from popular manufacturers including GeoAcoustics, Klein and EdgeTech as well as network digital interfaces for the latest breed of sonar.

FEATURES

- Four channel analogue sidescan acquisition
- Compatible with all analogue sidescan sonar systems including:
 - GeoAcoustics
 - EdgeTech
 - Klein
- Digital interface (ethernet) compatible with all modern sonars
- Two channel analogue output
- Wide range of gain and signal processing
- Standard recording formats: XTF, GeoPro & CODA
- Internal recording to hard disk and DVD RAM disks
- Simple 7-key interface
- Serial inputs for navigation and standard fix strings
- High resolution 15" screen
- High speed network connectivity
- 19" rack-mountable or freestanding
- Supports all standard printers (analogue and digital)
- Optional in-built UPS

BENEFITS

- Simple to use
- Reduced operating costs
- Reduced hardware
- Minimal user training
- Maximum flexibility
- Fully compatible with all popular post-processing systems
- Extends the life of existing sidescan systems
- Data stored internally is easily and quickly downloaded

CodaOctopus Ltd

www.codaoctopus.com
sales@codaoctopus.com

tel +44 131 553 1380 or +44 1869 337570, USA & Canada +1 888 340 2627

24hr support: support@codaoctopus.com

Support USA & Canada +1 888 340 CODA; worldwide +44 131 553 7003



Octopus 460+™ Sonar Acquisition System

Technical Specification

INPUTS AND OUTPUTS

Analogue inputs	16 bit scalable from 125mV to 5V configured as 4 x sidescan sonar (port and starboard x 2).
Analogue outputs	Dual analogue output (port and starboard, selectable Ch1 or Ch2), synchronous with trigger out allowing simultaneous acquisition of dual frequency sonar.
Trigger input	Single trigger input with variable threshold (250mV/2.5V) synchronises start of analogue acquisition.
Trigger outputs	Internal trigger (5v) user selectable ranges, 25m to 1000m.
Navigation & fix data	2 x RS232 serial inputs (9 pin D-type) for NMEA navigation (GGA, GLL, VTG, RMC, etc.) or Octopus fix and annotation strings. Additional inputs on request.
Printer interfaces	Centronics (25 way D-type) interface for Octopus, EPC, Ultra and Isys printers. SCSI interface for Alden/GeoPrinter (SCSI interface optional).
Network	10/100/1000 MbitS ⁻¹ Ethernet interface (RJ45).
Other interfaces	USB x 2 (standard). SCSI II (optional), others available on request.

DATA RECORDING

Recording devices	Internal 2.5" shock mounted hard disk (60Gb). Single DVD RAM/CD-R drive as standard. Optional second DVD RAM/CD-R. Other devices such as DAT, removable HDD etc. available on request.
Recording formats	XTF, GeoPro, CODA All data is recorded raw (without gain or processing applied).

DISPLAY MODES

Sidescan	Dual (port & starboard) or four channel sidescan display, vertically scrolling with co-registered oscilloscope display. All gain and processing controls on-screen.
Full screen	Dual or four channel vertically scrolling sub-bottom profiler.
Navigation	All navigation, fix, annotation and status information shown on all screens.

CONTROLS

User Interface	Familiar Octopus 7-key interface allowing quick and easy navigation to all functions without the need for a mouse. Arrow keys snap between groups of controls and allow selection of specific functions. 'Y' & 'N' keys allow settings to be saved or cancelled. 'PAGE' key allows rapid selection of display screens.
-----------------------	--

PROCESSING

Gain	Variable gain pre-amplifier (pre digitisation) to allow matching with all standard analogue sidescan sonar systems. Digital base gain. TVG with variable delay. Adjustable white level and black level display thresholds.
Signal processing	Bottom tracking. Water column removal. Slant range correction.

PHYSICAL

Dimensions	443mm(w) x 355mm(h) x 235mm(d) (19" rack compatible).
Weight	15kg
Power	90-250Vac 47-400Hz, 200Watts. Optional 24Vdc input Optional in-built UPS coupled with automatic power management and controlled shutdown capability guards against power loss problems. <i>NB. requires 24V battery pack in place of second DVD drive</i>
Construction	Rugged but lightweight aluminium chassis with anodised front panel.
Display	High-brightness 15" TFT screen, 1024 x 768 resolution.
Controls	Octopus 7-key user controls for all functions.

Octopus™, 460+™ and the Octopus logo are Trademarks of CodaOctopus

460+ 20050926

www.codaoctopus.com
sales@codaoctopus.com

Edinburgh tel +44 131 553 1380 fax +44 131 554 7143 Oxford +44 1869 337570 fax +44 1869 337571, USA & Canada +1 888 340 2627
24hr support: USA & Canada +1 888 340 CODA; worldwide +44 131 553 7003; support@codaoctopus.com

A CodaOctopus™ product. We reserve the right to change equipment specifications without notice.

