

Single Target DP Training Software

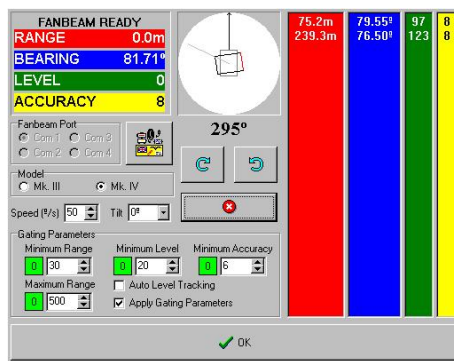
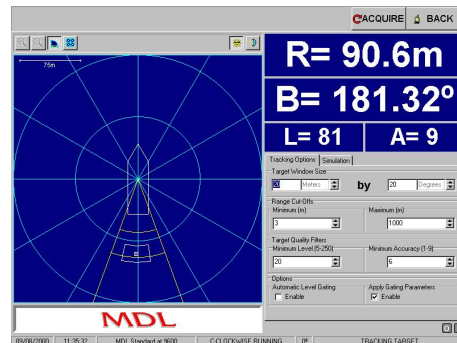
Fanbeam Training Software for Windows 95/98 and NT4.0



MDL's Single Target DP software has been designed to constantly display range and bearing information from the Fanbeam®4 while it controls or assists automatic dynamic positioning (DP) of a vessel next to a platform, jetty or other vessel. The software has now been embedded into MDL's universal control unit (UCU) as standard. This training version of the software allows users to simulate any kind of target and thus familiarise themselves with the various aspects of the software.

Main Target Display

The operator can select a target to track, tilt the Fanbeam® head and adjust the gating parameters. Targets displayed on screen can be selected and referenced in real-time. The operator can use the zoom command to observe a target's position during tracking operations more closely.

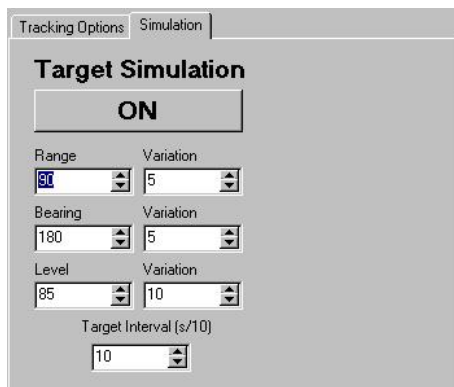
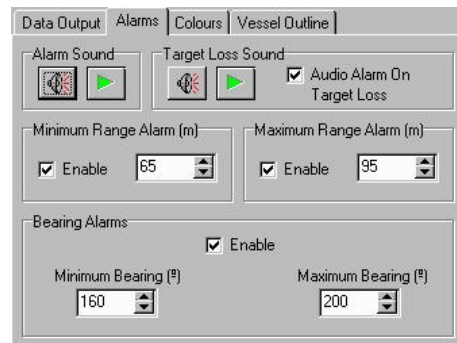


Fanbeam®4 Command

This dialog box allows the operator to set the Fanbeam®'s gating parameters to maximise the systems performance. Gating parameters can be used to filter out unwanted reflections and help with target identification.

Software Configuration

Other dialog boxes allow the operator to set audio and visual alarms, range and bearing limits and choose appropriate colour schemes according to lighting conditions in the ship's control room.



Target Simulation

This dialog box allows the user to select range and bearing parameters for a simulated target. This allows the software to behave exactly as if a Fanbeam® is present.

Software Features and Procedures

- Easy to use, intuitive, graphical interface.
- Simulate any target range, bearing and update frequency.
- Choose appropriate colour schemes for night and daytime operations.
- Two separate colour schemes can be swapped at anytime.
- Configure vessel outline for scaled display.
- Manual zoom or automatic scaling.
- Move screen display to area of interest.
- Set visual alarm parameters.
- Supports autotilt option.
- Data output strings for various DP consoles with configurable baud rate.
- Data adjustments including delta height, bearing correction and X/Y offsets.
- Audio/ visual alarms work as an early warning system for loss of target.
- Improved target loss algorithm.
- Resize target display window whilst tracking.

System Requirements

- IBM-compatible P150 MHz or above
- 16Mb RAM
- 1Gb HDD
- Microsoft Windows 95/98 or NT4.0
- PS/2 mouse/keyboard
- VGA 800 x 600 x 256 resolution display
- 1 serial RS232 port
- 1 parallel port
- Sound Blaster compatible card

Information contained herein is believed to be accurate. However, no responsibility is assumed by MDL for its use. Technical information is subject to change without notice. LaserAce, Quarryman and Boretrak are registered trademarks of Measurement Devices Ltd. Windows and Microsoft are registered trademarks of the Microsoft Corporation.