



Finally, a tool that stands up to your toughest inspections...  
Introducing the Industrial XL PRO™ VideoProbe® from Everest VIT®

Industrial environments are some of the toughest places to perform inspections. You need a tool that can capture accurate images even in the darkest, wettest, dirtiest places. With the brightest light output of any inspection tool in the industry and exceptionally durable construction, the Industrial XL PRO inspects anywhere and always provides you with clear results.

Inspect boiler tubes, heat exchangers, and piping with the precision of circumferential lighting and a powerful 50Watt metal halide arc lamp. Joystick articulation control and advanced image management capabilities put the Industrial XL PRO light-years ahead of the competition.

**Applications**

- Tanks and vessels
- Weld Examination
- Heat Exchangers
- Steam Generators
- Condensers/Chillers
- Feedwater Heaters
- Turbines
- Pumps
- Headers

**Interchangeable lens system to suit all industrial applications...**

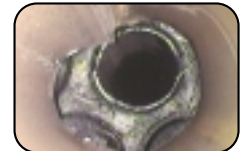
Easily examine the insides of tanks and vessels—the Industrial XL PRO's far-viewing capabilities and interchangeable, adjustable focus lens system are ideal for large area inspections. Additional features include:

- Menu-based image processing and management features
- 380,000 pixel imager and 5" LCD display provides sharp inspection images
- Full suite of advanced digital imaging storage, manipulation and export features
- Comparison measurement capabilities featuring video caliper and circle gauge measurement
- Built-in text generator for labeling and annotating live video output and captured images
- Audio annotation for adding sound clips to images
- Sturdy shipping/operating case with wheels and a telescopic handle

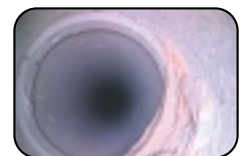
A hardworking, industrial tool that's both tough and technologically advanced—the Industrial XL PRO adapts to just about any inspection situation.



[www.everestvit.com/go/01932](http://www.everestvit.com/go/01932)



Failed feedwater heater tube at fossil station



Boiler tube with hydrogen damage



Collapsed concrete stormwater line beneath a process facility

**Service & Sales**

Toll Free 888•332•EVIT (888•332•3848)

Fax 973•448•0044

Worldwide Distribution

# INDUSTRIAL XL PRO PRODUCT SPECIFICATIONS

## System Specifications

### Operating Environment

Storage Temperature: -25°C to +60°C (-13°F to +14°F)

Operating Temperature: -20°C to +46°C (-4°F to +11°F)

LCD requires warm-up period below 0°C (32°F)

### Power Requirements

AC: 100 – 240V ( min 90 max 250) 50 –400HZ , 2A max.

DC: 12VDC nominal, min 11VDC, max 14VDC @ 11A

### Weight

Full system in case: 35lb (15.9Kg)

Full System without case: 17lbs (7.7Kg)

### Light Source

Dimensions: 9.5in x 10.9in x 5.5in  
(24.1cm x 27.6cm x 12.7cm)

Lamp Type: Metal Halide Arc

Lamp Wattage: 50 Watts input power

Lamp Output: 2600 Lumens

Color Temp.: 5885K

Lamp Life: 1000 hours median

## Display Specifications

Integrated 5.0 inch diagonal backlit display

Color active matrix TFT LCD

## Image Controls

Brightness

Long Exposure

Zoom

Split Screen

Inverse (mirror image)

## Embedded Processor Specifications

Processor: 32 bit, Pentium® class

Operating System: Multi-tasking real-time OS

Memory: 16MB Flash memory

Internal Image Storage Capacity:

Up to 450 low-res JPG images

Up to 140 hi-res JPG images

Up to 14 BMP images

Floppy Disk Capacity:

Up to 48 low-res JPG images

Up to 14 hi-res JPG images

## Video Probe

Diameter: 8.4mm (0.330in)

Lengths: 3.0M (10ft), 4.5M (15ft), 6.0M (20ft)

9.0M (30ft)\*, 18M (60ft) \*

\*non-articulating

## Camera

Camera Type: 1/6 inch Super HAD CCD

Resolution:

Up to and including 9 Meter length

480 HTV lines S-Video

460 HTV lines composite

Over 9 Meter length

330 HTV lines S-Video

300 HTV lines composite

Pixel Count:

Up to and including 9 Meter length

380,000 NTSC

440,000 PAL

Over 9 Meter length

250,000 NTSC

290,000 PAL

## Tip/Lens Options

Tip color	Field of view (FOV)	Depth of field (DOF)	Typical applications
Gold	20 degrees	350mm-inf. (14"-inf.)	Small tanks, small vessels
Black	40 degrees	20mm-800mm (1"-32")	1" and larger piping
White	40 degrees	50mm-inf. (2"-inf.)	Vessels and tanks
Blue	40 degrees	100mm-inf. (4"-inf.)	Far viewing, rooms
Yellow	80 degrees	15mm-600mm (1/2"-24")	3/8"-1" tubing
Green (side view)	40 degrees	20mm-600mm (1"-24")	1" - 8" piping

## Standard System Includes

Video Probe

Light Source

Shipping Case

4mm/f7 forward view lens in lens kit box

Operator's manual

