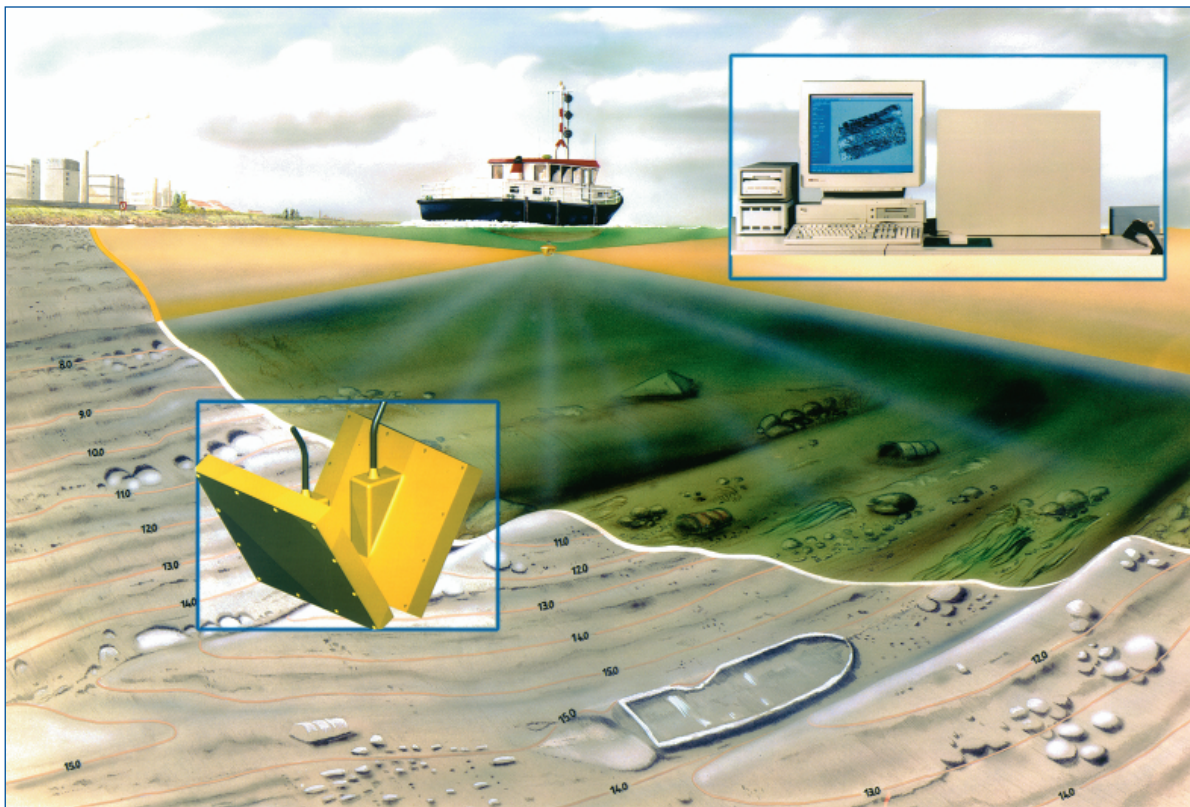


## ATLAS FANSWEEP 20 - 100 kHz/200 kHz



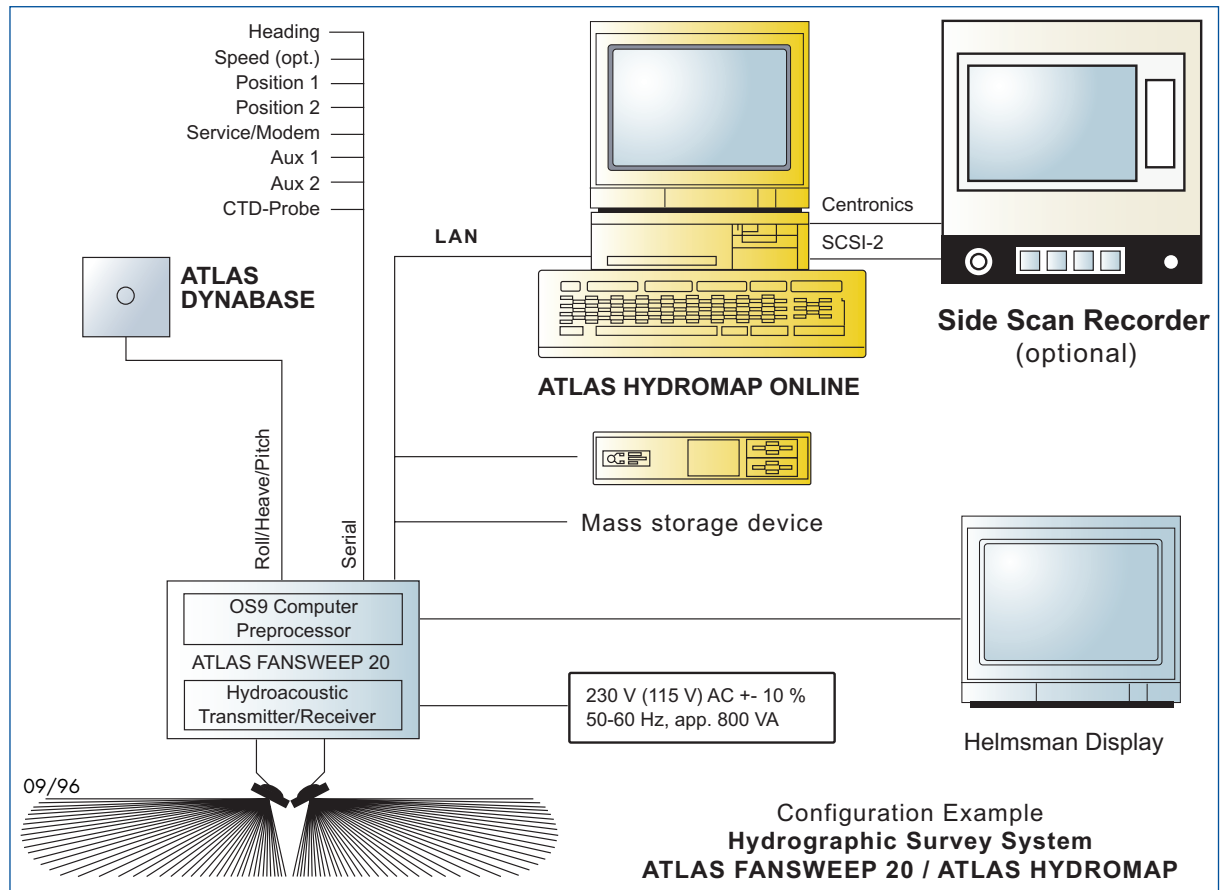
### Shallow Water Swathe Sounding System

About six years ago, ATLAS Hydrographic launched one of the first shallow water multi-beam sweeping echosounders, the ATLAS FANSWEEP, on the international market. Since then, the multi-beam sweeping echosounder method has achieved wide acceptance, particularly in the surveying of coastal waters, rivers and inland waterways. This acceptance has mainly been due to the possibility of mobile use resulting from good portability, and to the simplicity and speed with which the complete system can be installed on various vessels, including very small ones. In addition, it became possible to achieve high coverage combined with good accuracy, even for the outer beams, and a large number of depth values at points situated only a short distance apart.

#### Features

- Coverage up to 12 times the vertical depth
- Corresponding swathe width of 180° in side scan mode
- Up to 1440 beams per sweep
- Up to 4096 amplitude values per sweep for side scan measurements
- Accuracy above that required by the IHO for a coverage up to 6 times the vertical depth
- Output and display of side scan data for object detection simultaneous with bathymetry data
- Small size, low weight, transportable

# Specifications and Performance Data



ITEM	100 kHz	200 kHz
Coverage	1, 2, 4, 6, 8, 10, 12 x the vertical depth (depending on acoustic conditions)	
Longitudinal Beam Spacing	1.3°	
Accuracy	± (0.10 m + 0.2 % of the water depth) Up to 6 x coverage	± (0.05 m + 0.2 % of the water depth) Up to 6 x coverage
TVC Function	30 x log (2r); r = distance between transducer and bottom	
Number of Beams per Sweep	Up to 1440 values per sweep	
Scanning Angle		
Bathymetry	161°	
Side Scan	180°	
Min. Depth	< 1 m below transducer	< 0.5 below transducer
Max. Depth	Up to 600 m	Up to 300 m
Transmission Pulse Length	Min. 120 µs	Min. 40 µs
Transmission Power per Transducer	3000 W	700 W
Number of Amplitude Values per Sweep	Up to 4096 values per sweep	
Standard interfaces ATLAS FANSWEEP 20 Position 1; Position 2; Roll, Pitch, Heave Sensor, Gyro; CTD-Sensor, Service/Modem; AUX 1; AUX 2; VGA (Helmman Display); Ethernet in/out		



Australia  
2 Elphinstone Close  
Portsmith QLD 4870  
Tel: +61 (0) 7 4035 2522  
Fax: +61 (0) 7 4035 2511

Germany  
Kurfürstenallee 130  
28211 Bremen  
Tel: +49 (0) 421 457 2259  
Fax: +49 (0) 421 457 3449