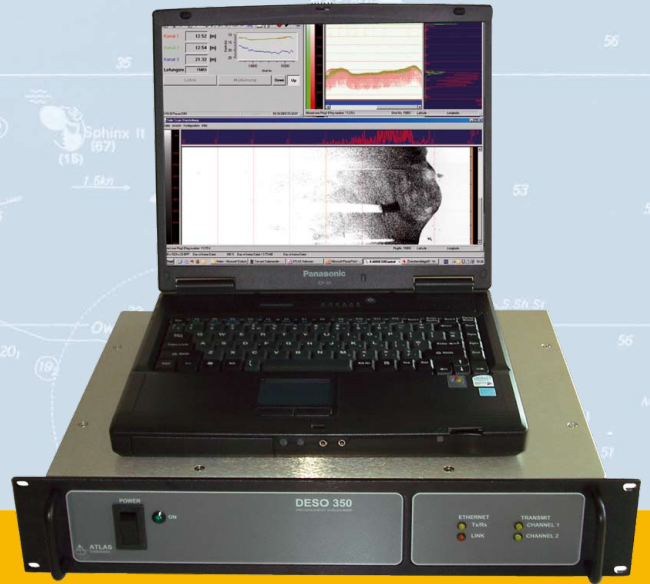


...a sound decision

THE ATLAS DESO 350
with one or two acoustic
channels is a new survey
echosounder incorporating
cutting-edge technology and
reliability of the ATLAS DESO
echosounders.



PRECISION SURVEY ECHOSOUNDER

The **ATLAS DESO 350** with one or two acoustic channels is a new survey echosounder incorporating cutting-edge technology and reliability of the ATLAS DESO echosounders. The unit is supplied in a compact casing or optional in a 19" rack at an excellent value for money ratio.

The **DESO 350** echosounder is operated by the ATLAS DESO CONTROL software installed on a standard personal computer. Alternatively, the echosounder can operate with built-in standard settings and output measured depths to a remote display unit. The software module offers internal data storage and playback of the 16-Bit digitised analogue return signals.

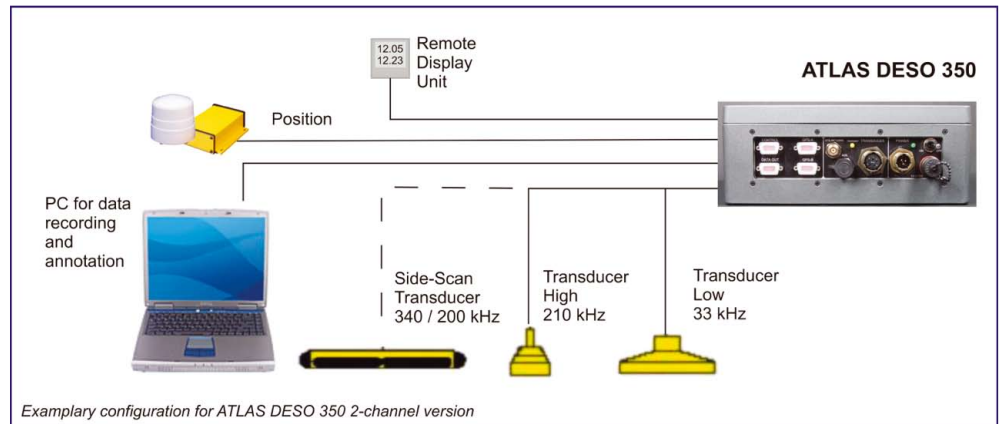
Effective object search operations with precise vertical depth reference becomes more and more important for instance in harbour navigation safety. For this purpose a side scan transducer can be operated.

FEATURES

- SELECTABLE TVG SETTINGS
- HIGH RESOLUTION DIGITAL DEPTH AND RAW ECHOGRAM RECORDING
- REPLAY FUNCTION AND RAW DATA ECHOGRAM
- SIDE SCAN

OPTIONS

- INTERNAL DGPS RECEIVER
- 19" RACK CASING
- REMOTE DISPLAY



KEY FEATURES

Operating Frequencies

High band:
100 kHz - 750 kHz
Low band:
24 kHz - 50 kHz

Depth Range

0.2 - 200 m @ 210 kHz
0.5 - 600 m @ 33 kHz

Output Power

200 WRMS max
depending on used frequency

Accuracy (1 s)

0.01 m ± 0.1% depth @ 210 kHz
0.10 m ± 0.1% depth @ 33 kHz

Phasing

Automatic scale change, 10%,
20%, 30% overlap or manual

Resolution

0.01 m

Depth Display

On control PC and LCD display

Annotation

Internal: date, time, GPS position
External: from RS232 port

Interfaces

4 x serial ports, baud rate
selectable 4 800 - 19 200 and
Ethernet LAN interface

Data Protocols

NMEA 0183, ODOM, ATLAS DESO 25

Storage

Data storage on optional
standard PC

Internal GPS

Optional internal GPS receiver
with beacon antenna

Software

ATLAS DESO CONTROL software
supplied

Log File

Complete record of all parameter settings

Help

Comprehensive context sensitive help

Installation

Rack mount or desk top

Power

9 - 32 VDC, <30 W
optional external power supply
with 115 VAC or 230 VAC

Environment

0° - 50° C, 5 - 90% relative
humidity, non-condensing

Dimensions

Height x Width x Depth
280 mm x 230 mm x 115 mm

Weight

5 kg

Germany

Kurfürstenallee 130
28211 Bremen
Tel: +49 (0) 421 457 2259
Fax: +49 (0) 421 457 3449